

Retail Petroleum Application Guide

Exterior & Interior LED Lighting



Since 1976, LSI Industries has been the innovator and leader in the retail petroleum and convenience lighting industry. With over 40 years of unparalleled experience and expertise, LSI has pioneered the development of leading-edge product innovations in canopy, area lighting and other outdoor fixtures. LSI has been able to help marketers optimize their lighting to enhance and improve brand presence, visibility and image.

Today, LSI continues its legacy of innovation and excellence in the design, development and manufacturing of high performance, energy efficient retail petroleum lighting products. Whether its building a new site or retrofitting an existing location, LSI has the experience, products, design assistance and service capabilities to put your site in the best possible light.

Introduction.....1

Table of Contents.....2

Exterior Fixtures.....3

 Canopy.....4

 Area/Site.....5

 Poles.....6

 Wall Mount.....7

 Soffit.....8

 Floods.....9

Interior Fixtures.....10

 Strip.....11

 Open Ceiling.....12

 Recessed.....13

 Wall Wash & Accent.....15

 Downlighting, Beer & Cooler.....16

 Decorative.....17

 Emergency.....18





Exterior Lighting Fixtures

Canopy
Area/Site
Wall Mount
Soffit
Flood

Canopy Lighting Solutions



Scottsdale Vertex™ (SCV)

Features rich canopy with innovations such as convenient field serviceability, silicone optics (shatterproof, non-yellowing and lightweight), low-profile, dimmable, optional wireless controls, simple to install.

Size/Housing Depth	Color Temp/CRI	Distribution	Lumen Output
13.5" x 13.5" Depth: 2.1"	5000K, 4000K, 3500K, 3000K CRI - 70	SC, SCFT	10,000 - 23,000

DLC Premium™ Approved, IP66, ROHS Compliant, ARRA, UL, Title 24



Legacy™ (CRUS)

The clear choice for new Canopy installations. Recessed design with a sleek low profile mount. Also designed to Replace the LSI Scottsdale - installs quickly into existing 4" hole without extra cutting, drilling or caulking.

Size/Housing Depth	Color Temp/CRI	Distribution	Lumen Output
15 15/16" x 15 15/16" Depth: 7/8"	5000K CRI - 70	SC and AC	10,000 - 23,000

DLC Approved, IP67, ROHS Compliant, UL



Legacy™ Surface Mount (CRUS SM)

LSI's CRUS Surface Mount LED fixture is designed for illuminating open spaces, with mounting heights of 12' or greater. Designed for easy installation.

Size/Housing Depth	Color Temp/CRI	Distribution	Lumen Output
16.13" x 16.13" Depth: 2.56"	5000K CRI - 70	SC	up to 23,500

DLC Approved, IP67, ROHS Compliant



Scottsdale Stride Canopy (SCS)

Offers exceptional performance, efficiency and a unique LSI design. Multiple lumen packages, outstanding efficacy and field serviceability make it an ideal commercial canopy solution.

Size/Housing Depth	Color Temp/CRI	Distribution	Lumen Output
16.13" x 16.13" Depth: 2.56"	5000K, 4000K CRI - 70	SC, SCFT	15,000 - 19,000

DLC Premium™ Approved, ROHS Compliant, UL, Quick Ship



Area/Site

Poles



Mirada Medium (MRM)

Energy efficient, state-of-the-art molded silicone optics. Sleek contemporary low-profile styling. Complimentary area light, round & bollard. The foundation of the Mirada family.

Size/Housing Depth	Color Temp/CRI	Distribution	Lumen Output
31 3/16 x 13 1/2" Depth: 7.5"	5000K, 4000K, 3000K, 2700K CRI - 70-80	Types 2, 3, FT, FTA, 5W	7,000 - 42,000

DLC Premium™ Approved, IP66, ROHS Compliant, ARRA, UL, Title 24



Mirada Post Top (MPH)

Features modern urban aesthetics and exceptional performance. With superior distributions and intelligent controls, the Mirada Post Top boasts up to a peerless 72K delivered lumens.

Size/Housing Depth	Color Temp/CRI	Distribution	Lumen Output
20" x 20" Depth: 33 1/16"	5000K, 4000K CRI - 70	Types 2, 3, FT, 5W	35,000 - 72,000

DLC Premium™ Approved, IP66, ROHS Compliant, ARRA, UL



Slice Medium (SLM)

Energy efficient, state-of-the-art molded silicone optics. Sleek contemporary low-profile styling. Complimentary wall sconce.

Size/Housing Depth	Color Temp/CRI	Distribution	Lumen Output
28 11/16" x 16" Depth: 7.5"	5000K, 4000K, 3000K, 2700K CRI - 70-80	Types 2, 3, FT, FTA, 5W	9,000 - 42,000

DLC Premium™ Approved, IP66, ROHS Compliant, UL, ARRA, Title 24



Commercial Area Lights (SMA)

A high performance commercial grade area luminaire, value driven with DLC® premium performance.

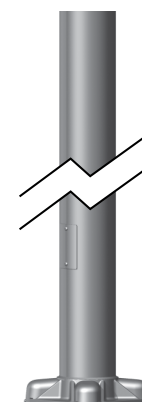
Size/Housing Depth	Color Temp/CRI	Distribution	Lumen Output
13" x 21.1" Depth: 3.46"	5000K CRI - 80	Type 3, 5W, FT	up to 29,000

DLC Premium™ Approved, IP65, ROHS Compliant, UL

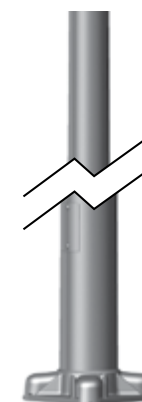
LSI offers a full line of poles and mounting accessories to complete your lighting assembly. Aluminum and steel in both square and round shafts. In addition, LSI offers round tapered, fluted and hinge based poles. Designed and engineered for durability and protected with our oven baked DuraGrip Protection System. Also available with our DuraGrip+ Protection system for unmatched corrosion resistance and an extended warranty. American made in our Ohio facility with industry leading lead times.



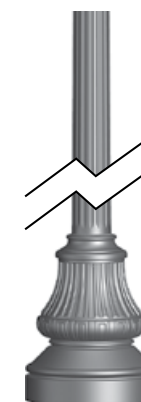
Square Pole
14'-39'



Round Pole
10'-30'



Tapered Pole
10'-30'



Fluted Round
8'-18'



Hinged Base Round
8'-20'



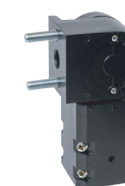
Universal Mounting Bracket (UMB)

The 3G rated UMB allows for seamless integration of LSI luminaires onto existing/ retrofit or new construction poles. The UMB was designed for square or round (tapered or straight) poles with two mounting hole spacings between 3.5" - 5".



Pole Quick Mount Bracket (PQM)

The Pole Quick Mount Bracket allows for lightning fast installation of LSI luminaires onto existing and new construction poles with LSI's B3 or B5 standard pole bolt patterns.



Adjustable Slip Fitter (ASF)

The ASF is a 3G rated rugged die case aluminum adapter to mount LSI luminaires onto a 2" iron pipe, 2 3/8 OD tenon. The ASF can be rotated 180° allowing for tilting LSI luminaires up to 45° and 90° when using a vertical tenon.



Pole Quick Mount Bracket with Tilt (PQM15)

The PQM15 allows for preset 15° uptilt of LSI luminaires for greater throw of light and increased vertical illumination as well as fast installation onto poles with LSI's 3" or 5" bolt pattern.



Wall Mount

Soffit



Mirada Wall Sconce (XWM)
Energy efficient, state-of-the-art molded silicone optics. Sleek contemporary low-profile styling. Complimentary area light, round & bollard. Part of our Mirada outdoor family.

Size/Housing Depth	Color Temp/CRI	Distribution	Lumen Output
12 3/4" x 7 1/2" Depth: 4.5"	5000K, 4000K, 3000K CRI - 70	Types 2, 3 & Forward Throw	3,000 - 12,000

DLC Premium™ Approved, IP65, ROHS Compliant, ARRA, UL, Title 24



Slice Wall Mount (XLCW)
Packed with performance and every savings, LSI's LED Slice Wall Sconce will complement any site. The sleek fixture delivers excellent, uniform lighting for your building facade.

Size/Housing Depth	Color Temp/CRI	Distribution	Lumen Output
17 1/2" x 7 3/16" Depth: 10.5"	5000K CRI - 65	Forward Throw, Symmetrical	3,500 - 5,000

IP65, ROHS Compliant, UL



Greenbriar Wall Sconce (XGBWM3)
Energy efficient wall-mounted fixture creates a brighter environment at lower light levels, making the Greenbriar ideal for entrance, egress and security lighting.

Size/Housing Depth	Color Temp/CRI	Distribution	Lumen Output
28 11/16" x 16" Depth: 7.5"	5000K, 4000K, 3000K, 2700K CRI - 70-80	Wide, Forward Throw, Wall Wash	3,000 - 5,000

IP67, ROHS Compliant, ARRA



Slim Wall Pack (WPSLS, WPSLL)
Attractive architectural styling in two sizes provides full cutoff glare free illumination. Quick and easy mounting via bottom hinged design to prevent leaks.

Size/Housing Depth	Color Temp/CRI	Distribution	Lumen Output
6" x 7.7" x 4" Depth 8.9" x 9.4" x 6.6" Depth	5000K, 4000K, 3000K CRI - 70	Asymmetrical	1,000 - 4,000 4100-9300

DLC Approved, ROHS Compliant, UL, ARRA, Quick Ship



Traditional Wall Pack (TSWP, TMWP, TLWP)
Utilizes glare free LED placement and reflector technology. These fixtures produce a smoother and whiter light resulting in more footcandles on the ground. Best choice for replace traditional HID wall packs.

Size/Housing Depth	Color Temp/CRI	Distribution	Lumen Output
6.8" x 11" x 5.3" Depth 8.8" x 8.5" x 9" Depth 12.8 x 9" x 7.3" Depth	5000K, 4000K, 3000K CRI - 80	Asymmetrical	2,200 4,000 5,300 - 10,200

DLC Premium™ Approved, ROHS Compliant, UL, ARRA, Quick Ship



Soffit Light (XSL2)
Used for recessed downlighting applications such as soffits, commercial canopies and drive-thrus. Thermal protector is standard, making it ideal for applications with insulated spaces.

Size/Housing Depth	Color Temp/CRI	Distribution	Lumen Output
18" x 18" Depth: 8.25"	5000K CRI - 69	Symmetrical, Asymmetrical	up to 6,751

ARRA, ROHS Compliant, IP67



Soffit Light (XSPS)
Compact LED fixture is easily installed directly to soffit surface in either retrofit or new construction applications. The XSPS provides excellent performance in a sleek, flush mount fixture.

Size/Housing Depth	Color Temp/CRI	Distribution	Lumen Output
13.25" x 13.25" Depth: 5 11/16"	5000K, 4000K, 3000K, 2700K CRI - 70-80	Symmetrical	up to 5,631

DLC Approved, ROHS Compliant, UL, ARRA



Walkway Canopy Light (WCP)
Designed to optimize LED life and light output. The WCP housing is hinged for quick and easy mounting and installation. Wireless controls are available via the LSI Airlink solution enabled by Synapse.

Size/Housing Depth	Color Temp/CRI	Distribution	Lumen Output
11.9" x 11.9" Depth: 6.24"	5000K, 4000K, 3000K CRI - 80	Wide	3,000 - 10,000

DLC Premium™ Approved, ROHS Compliant, UL, ARRA, Damp location



Flood



Traditional Floodlights (TSFL, TMFL)

LSI floodlights use optical grade individual acrylic lenses which deliver more lumens to the desired target with less glare and less wasted light. Precision die cast aluminum housing in two sizes provides rugged and durable enclosure for long life.

Size/Housing Depth	Color Temp/CRI	Distribution	Lumen Output
6.4" x 5.4" x 7.5" Depth 9.4" x 6.5" x 7.6" Depth	5000K, 4000K, 3000K CRI - 70	Wide	2,000 4,000

DLC Premium™ Approved, ROHS Compliant, UL, ARRA, Quick Ship



Traditional Floodlights (TLFL)

LSI floodlights use optical grade individual acrylic lenses which deliver more lumens to the desired target with less glare and less wasted light. Precision die cast aluminum housing in three sizes provides rugged and durable enclosure for long life.

Size/Housing Depth	Color Temp/CRI	Distribution	Lumen Output
12" x 9.9" x 10.5" Depth 12" x 9" x 12.3" Depth 16" x 11.5" x 12.2" Depth	5000K, 4000K, 3000K CRI - 70	Wide	8000 - 13,000 16,000 - 18,000 25,000 - 41,000

DLC Premium™ Approved, ROHS Compliant, UL, ARRA, Quick Ship



High-Lumen Flood (SAFL)

The high end, architectural design and high performance distribution of this series is ideal for applications requiring the specific placement of light. Applications such as sports arenas, athletic fields, shipyards, flag poles, etc.

Size/Housing Depth	Color Temp/CRI	Distribution	Lumen Output
32 13/16" x 24 7/16" Depth: 15-18"	5000K, 4000K CRI - 80	Spot, Medium, Wide	35,000 - 67,000

IP65, ROHS Compliant, Wet location



Interior Lighting Fixtures

- Strip
- Open Ceiling
- Recessed
- Downlighting
- Wall Wash & Accent
- Beer Cooler
- Decorative
- Emergency



Strip

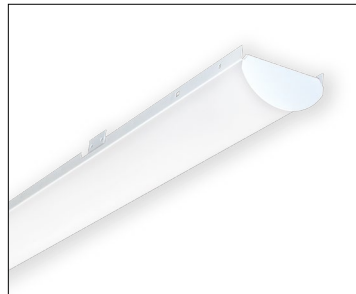
Open Ceiling



Lensed Strip (SDL)
Lensed striplight. Custom extruded frosted acrylic lens eliminates bright spots and provides high vertical illumination and visual comfort. Damp location.

Size/Housing Depth	Color Temp/CRI	LPW	Lumen Output
2', 4' and 8' length Depth: 4.378"	5000K, 4000K, 3500K, 3000K CRI - 80-90	147	1500 - 18000

DLC Premium™ Approved, Title 24, ARRA, UL, ROHS Compliant, Damp location



Lensed Strip Retrofit Kit (SDLRK)
Custome extruded frosted lens with the option of a factory installed bracket that can be field adjusted to fit existing housing. Damp location.

Size/Housing Depth	Color Temp/CRI	LPW	Lumen Output
4' and 8' length Depth: 4.378"	5000K, 4000K, 3500K, 3000K CRI - 80-90	156	1500 - 18000

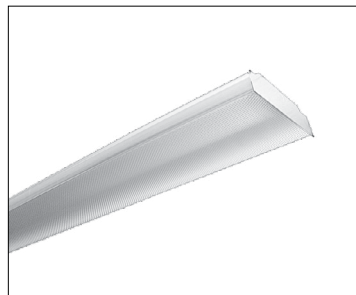
DLC Premium™ Approved, Title 24, ARRA, UL, ROHS Compliant, Damp location



Strip (S)
The sleek architectural S is designed with tooless entry features saving time and money on installation. The S series delivers unparalleled performance and efficiency meeting stringent energy requirements.

Size/Housing Depth	Color Temp/CRI	LPW	Lumen Output
2', 4' and 8' length Depth: 1.897"	5000K, 4000K, 3500K, 3000K CRI - 80	159	1500 - 18000

DLC Premium™ Approved, ROHS Compliant, UL, ARRA, Title 24, Damp location



Low Profile Wraparound (WNA)
The WNA is a low profile wrap with heavy-duty steel ends for row mounting. This fixture provides wide, even light distribution. With their exceptional long life, the LED light source make it virtually maintenance free.

Size/Housing Depth	Color Temp/CRI	LPW	Lumen Output
48" x 14 3/8"	5000K, 4000K, 3500K, CRI - 80	N/A	4,000 - 12,500

ARRA, UL



Dome Wrap Surface/Pendant Mount (DW)
An architecturally designed wraparound with an aesthetically pleasing round shape. It contains a snap in lens versus a lift and shift which allows for more secure fit. The LED light source makes the DW virtually maintenance free.

Size/Housing Depth	Color Temp/CRI	LPW	Lumen Output
48" x 9.5" Depth: 3 3/8"	5000K, 4000K, 3500K CRI - 70	DLC Approved	Hight Output Super Saver

ARRA, UL, IP66



Excursion Parking Garage Luminaire (EXN)
The LSI Excursion parking garage luminaire featuring edge-lit technology compliments any architectural setting and delivers energy-efficient, uniform downlight for safety.

Size/Housing Depth	Color Temp/CRI	Distribution	Lumen Output
17.5" Depth: 4.7"	5000K, 4000K CRI - 70	T5W, T5N, T5WU, T5NU	1,500

DLC Premium™ Approved, ARRA, UL, ROHS Compliant, IP66



Aureus Interior Low Bay/High Bay (AUM)
Offers excellent ambient lighting with a symmetrical distribution that delivers horizontal and vertical uniformity, glare control, and visual comfort.

Sizes	Color Temp/CRI	LPW	Lumen Output
22", 16"	5000K, 4000K, 3500K CRI - 80	156	15,489 - 23,923

DLC Approved, ARRA, UL, ROHS Compliant



Round High Bay (RHB)
The RHB LED high bay is designed for a wide variety of commercial, industrial and retail settings such as warehouses, manufacturing plants, sporting venues, big-box stores and more.

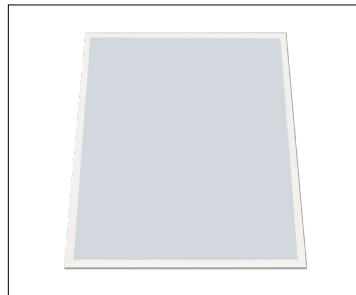
Sizes	Color Temp/CRI	LPW	Lumen Output
13.4" width 6.7" depth	5000K, 4000K CRI - 80	156	18,000 - 30,000

DLC Premium™ Approved, IP65, UL, ROHS Compliant



Recessed

Recessed



Edge Lit Flat Panel Light (SFP)

Designed to deliver general ambient lighting in a variety of indoor settings. This high efficiency luminaire provides long-life and uniform illumination. Selectable Lumen and Color Temp available soon.

Size/Housing Depth	Color Temp/CRI	LPW	Lumen Output
2' x 4', 2' x 2', 1' x 4'	5000K, 4000K, 3500K CRI - 80	107	3,000 - 5,000

DLC Approved, UL, ROHS Compliant, Damp location, Quick Ship



Low Profile Recessed Troffer (LPEC)

Ideal for shallow plenum applications. Best in class configurable lumen packages and efficiencies. Delivers even illumination.

Size/Housing Depth	Color Temp/CRI	LPW	Lumen Output
2' x 4', 2' x 2', 1' x 4'	5000K, 4000K, 3500K, 3000K CRI - 80	143	2,000 - 9,000

DLC Premium™ Approved, ARRA, UL, ROHS Compliant



Low Profile Recessed Troffer (LPASC)

Low profile design is ideal for shallow plenum applications. Delivers even illumination with excellent, low angle brightness control throughout the space.

Size/Housing Depth	Color Temp/CRI	LPW	Lumen Output
2' x 4', 2' x 2', 1' x 4'	5000K, 4000K, 3500K, 3000K CRI - 80	143	2,000 - 9,000

DLC Premium™ Approved, ROHS Compliant, UL, ARRA



Lensed Troffer (OPT)

Features an exclusive LSI design and DLC performance. Delivers a superior replacement option for traditional fluorescent tube recessed troffer fixtures and Gen 1 LED fixtures.

Size/Housing Depth	Color Temp/CRI	LPW	Lumen Output
2' x 4', 2' x 2', 1' x 4'	5000K, 4000K, 3500K, CRI - 80	N/A	4,000 - 4,800

DLC Approved, UL, ROHS Compliant, Damp location



Troffer Retrofit Kit (TRK)

The LED Troffer Retrofit Kits are designed to replace traditional fluorescent fixtures. The retrofit kit is designed to deliver unparalleled performance and efficiency meeting stringent energy requirements.

Size/Housing Depth	Color Temp/CRI	LPW	Lumen Output
2' x 4', 2' x 2', 1' x 4'	4000K, 3500K, CRI - 80	DLC Premium	3,200 - 4,800

DLC Premium™ Approved, UL, ROHS Compliant, Damp location, Quick Ship



Recessed Direct/Indirect (ASC)

Specially designed to spread uniform illumination throughout the interior room cavity hitting vertical surfaces from ceiling to floor. This high performance fixture comes in 2 sizes with a choice of lumen outputs.

Size/Housing Depth	Color Temp/CRI	LPW	Lumen Output
2' x 4', 2' x 2'	5000K, 4000K, 3500K CRI - 80	DLC Premium	2,900 - 6,900

DLC Approved, ARRA, UL, ROHS Compliant



Side Light Recessed Troffer (SLI)

SLI is a low-profile troffer that provides balanced illumination from the sides of the fixture. This results in superior low angle brightness control.

Size/Housing Depth	Color Temp/CRI	LPW	Lumen Output
2', 4' and 8' length Depth: 1.897"	5000K CRI - 70	DLC Premium	2,400 - 6,000

ROHS Compliant, UL, ARRA



Wall Wash & Accent



Mirco Wall Wash (MWW)

Ideal for applications demanding a compact fixture and narrow light beam to highlight vertical surfaces. The recessed installation hides the light source while providing uniform illumination of vertical surfaces and/or displays.

Size/Housing Depth	Color Temp/CRI	LPW	Lumen Output
5 3/4" x 3 1/2" 2' or 4' Length	5000K, 4000K, 3500K, CRI - 70 or 80	N/A	2,000 - 4,300

ROHS Compliant, ARRA



Linear Sign/Wall Washer (LXW2)

The LXW2 is a high output, decorative fixture ideal for lighting graphics or washing the wall. The LXW2 can be mounted to either the ceiling or wall. Easy adjustment allows the fixtures to be aimed for optimal performance.

Size/Housing Depth	Color Temp/CRI	LPW	Lumen Output
38.15" x 38.8" Depth: 1.25"	4000K, 3500K, CRI - 85	N/A	760 per foot (NW) 740 per foot (WW)

ARRA, UL



Linear Display and Accent (LXC2)

Ideal for display case, accent, undercabinet and shelf lighting. Fixture adjusts from 0° to 90° to put the light where you want it.

Size/Housing Depth	Color Temp/CRI	LPW	Lumen Output
1 1/4" x 15/16"	5000K, 4000K, 3500K CRI - 70-85	DLC Premium	875 per foot (CW), 800 per foot (NW), 780 per foot (WW)

ARRA, UL



Downlights, Beer & Cooler



Retrofit Kit (PDL6)

The PDL6K is a complete all-in-one-unit that comes with an integrated LED module and heat sink with your choice of baffle, reflector or eyeball. The 6" retrofit kit is suitable for new construction, remodel and retrofit applications.

Size/Housing Depth	Color Temp/CRI	LPW	Lumen Output
6-1/8" diameter, 7.5" depth	3000K and 4000K CRI - 80	N/A	800 and 900

Title 24, ROHS Compliant



Enclosed & Gasketed (EG3)

With its vaportight design and hi-impact, reinforced fiberglass housing the LED EG3 fixture is ideal for utility, backroom and cooler applications.

Size/Housing Depth	Color Temp/CRI	LPW	Lumen Output
2', 4' or 8' Depth: 4.13"	5000K, 4000K CRI - 80	DCL Premium	4,500 - 13,000

DLC Premium™ Approved, ARRA, UL, ROHS Compliant, Wet location



Archietectural New Contruction (LAD)

The LED Archietectural new construction downlight series delivers superior performance and energy efficiency. Designed to use anodized aluminum re-flectors delivering even illumination and low glare.

Size/Housing Depth	Color Temp/CRI	LPW	Lumen Output
4-7/8" diameter 6" depth	2700, 3000K, 3500 and 4000K CRI - 80	DLC Premium	1000 - 4000

Title 24, ROHS Compliant, Damp location



Decorative Indoor/Outdoor



Abolite Standard Dome

The LSI Abolite Standard Dome is a classic RLM design that features elegance and timeless simplicity.

Sizes	Color Temp/CRI	LPW	Lumen Output
12", 14", 16" and 18" diameters available	5000K, 4000K, 3500K 70 or 80 CRI	N/A	Up to 1055

ARRA, UL



Abolite Angled Reflector

The LSI Abolite Angled Reflector casts the perfect highlight on signs, product displays and key architectural features.

Sizes	Color Temp/CRI	LPW	Lumen Output
7" x 10", 9"x 11.5" or 11" x 13.5"	5000K, 4000K, 3500K 70 or 80 CRI	N/A	Up to 1055

ARRA, UL



Abolite Standard Bowl

Ambient and accent lighting with a designer edge. High performance LED optics housed in traditional and contemporary housings give you a number of choices for indoor and outdoor lighting requirements.

Size/Housing Depth	Color Temp/CRI	LPW	Lumen Output
12" x 13"	5000K, 4000K, 3500K 70 or 80 CRI	N/A	Up to 1055

ARRA, UL



Emergency Indoor/Outdoor



Combo Exit/Emergency Light (ECM)

A slim-profile thermoplastic LED exit sign/emergency light combo that offers modern design, including a standard flat faceplate, long-lasting and energy-efficient LEDs, an innovative LED lamp head.

UL, Damp location, Quick Ship



Mirco Exit Sign (EMS)

These slim and low profile contemporary LED exit signs provides a crisp, clean look and excellent energy savings.

UL, Damp location, Quick Ship



Micro Adjustable LED Emergency Light (EAR)

Feature rich canopy with innovations such as combined optical distributions, field serviceability and simple installation. Industry leading silicone optics. Made in USA.

UL, Damp location, Quick Ship



LSI Industries Inc. 10000 Alliance Rd. Cincinnati, OH 45242
www.lsi-industries.com
513.372.3200
©2019 LSI Industries Inc. All Rights Reserved.