



ENCORE™

FROM LSI



Petroleum Lighting™



ENCORE™

FROM LSI

Occasionally, a solution comes along that causes one to pause and think, "It's so logical, why didn't I think of that?" Enter the **ENCORE** canopy lighting system from LSI.

Until recently, the 320-Watt Scottsdale® and Flat Lens Scottsdale were the perfect solutions to meet virtually any canopy lighting objectives.

But times have changed:

- Zoning restrictions have become more stringent
- An emphasis on retail sophistication has intensified competition
- Energy costs continue to rise

Until now, no single lighting system afforded marketers the flexibility to respond quickly and cost-effectively to these ever-changing conditions.

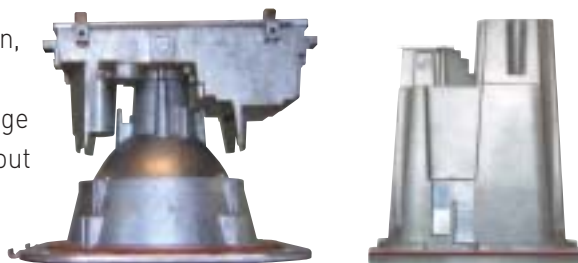
That is until **ENCORE!**

- **Two housings (Top Access or Bottom Access)**
- **Four optic choices**
- **NEW lamp choices**

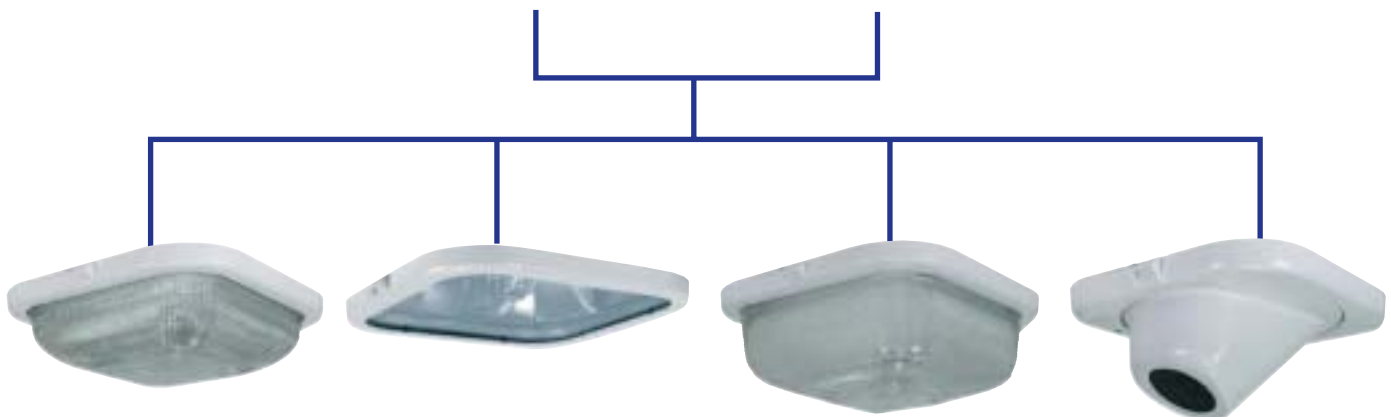
Install it once. Re-configure the optic and lamp choices forever without changing the housing. Versatile. Flexible. Logical. Unlike any other lighting solution, the **ENCORE** canopy lighting system is intelligent canopy lighting.

ALL THIS FLEXIBILITY... ALL THESE OPTIONS... IN TWO NEW ENCORE HOUSINGS.

And, because of its unique design, as your lighting needs change, you can quickly and easily change your optics configurations without replacing the housing.



Combined with easy, one-person installation, the **ENCORE** is the most intelligently conceived family of canopy fixtures since the Scottsdale.

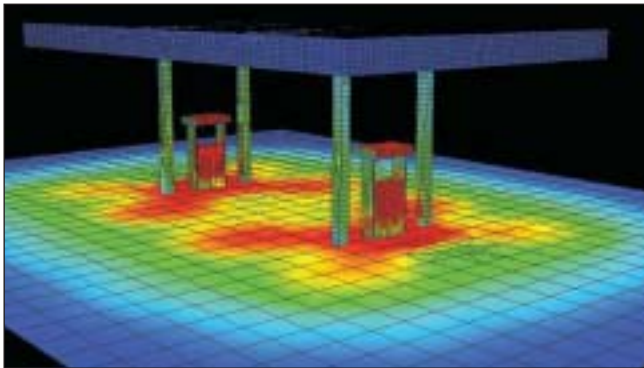


ENCORE FLEXIBILITY, GREATER VISUAL IMPACT AND LESS ENERGY CONSUMPTION

The **ENCORE** canopy lighting system allows you to take advantage of modern technology and the flexibility of its four-optics offering to combine the right number of fixtures, with the right wattages, with the right optics to produce the greatest visual impact and energy savings possible.

TYPICAL CANOPY COST ANALYSIS OVER 1 YEAR (40' X 90' CANOPY / 6 DISPENSERS)				
FIXTURE TYPE	# OF FIXTURES	KWH/YEAR	\$/YEAR	SAVINGS/YEAR*
400W DAKOTA®	24	48,145	\$ 3,851	\$ 0
320W SCOTTSDALE®	18	29,013	\$ 2,321	\$ 1,530
250W ENCORE FLAT LENS & 100W ENCORE FOCUS	8 12	16,872	\$ 1,349	\$ 2,502
200W ENCORE LOW PROFILE & 100W ENCORE FOCUS	8 12	15,014	\$ 1,201	\$ 2,650
.08 / KWH, 12-HOUR / DAY, 365 DAYS A YEAR FIXTURE X FIXTURE WATTAGE X 12 X 365 / 1,000 = \$/YEAR				

* Annual savings when compared to the same size canopy with 24 400-Watt fixtures.



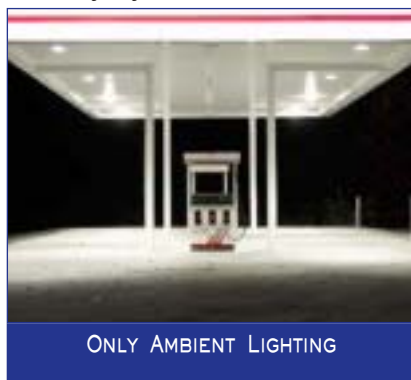
* Combine the **ENCORE Focus** and 200-Watt **ENCORE Low Profile** to create the most modern, appealing, and energy-saving site possible. This canopy configuration produces maximum visual comfort, seeability, and improved vertical foot-candle performance over a canopy with all 320-Watt fixtures.

* In strict zoning areas, combine the **ENCORE Focus** with the **ENCORE Flat Lens** to enhance the visual impact of your site and save on energy consumption, all while staying within the realm of local community-friendly guidelines.

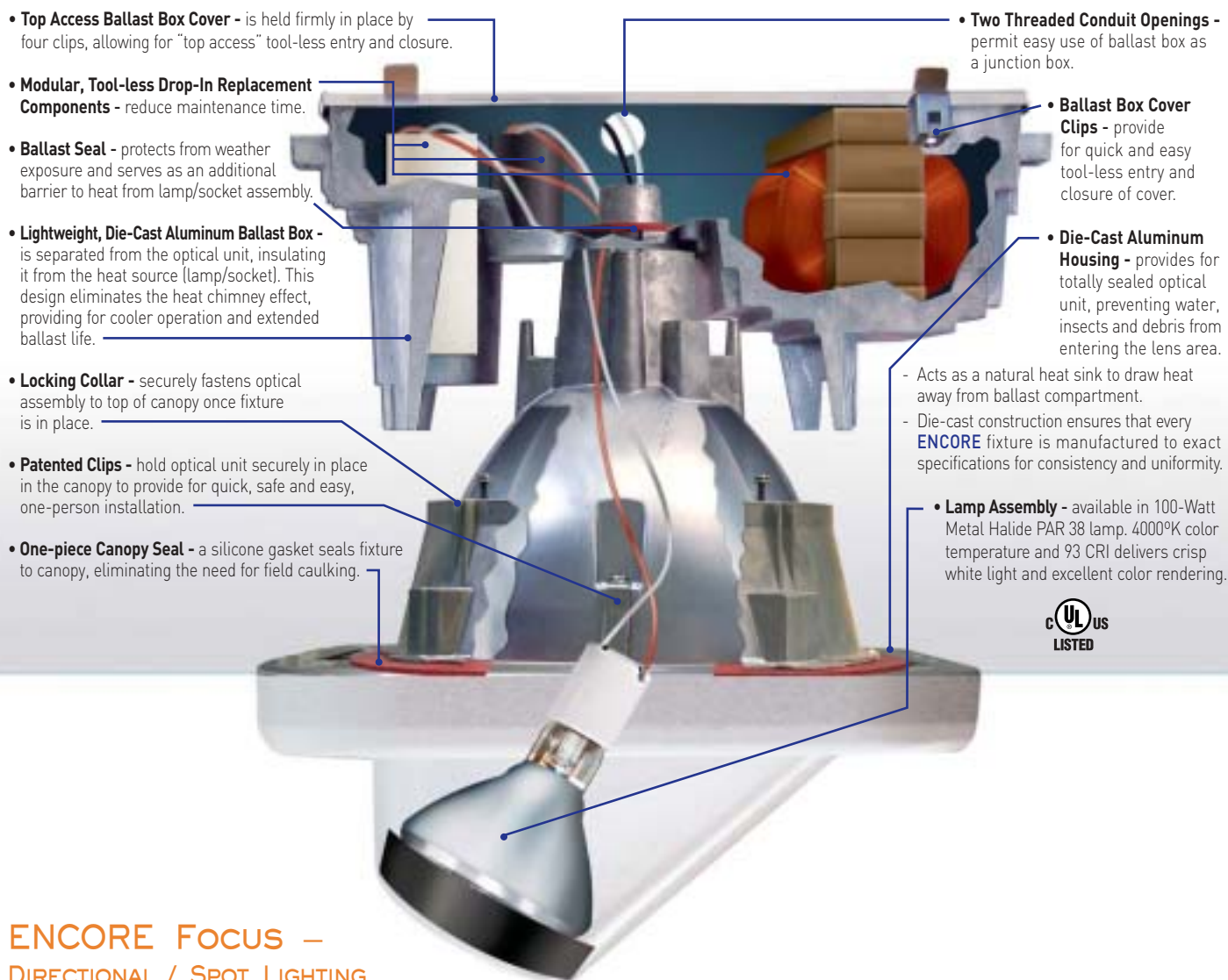
SEEING IS BELIEVING

For the first time, you can combine ambient and task lighting to create the most effective site possible. Use the **ENCORE Focus** with other **ENCORE** optics to produce unmatched vertical illumination and dramatic visual impact, all while reducing energy consumption. The effect is astounding; the result beyond compare.

Ambient lighting is achieved with **ENCORE Flat Lens** (front half) and **ENCORE Low Profile** (back half) fixtures



The new **ENCORE Focus** is without a doubt the most recognizable of the four **ENCORE** optics. Its contemporary design may be unique to the canopy, but its purpose and mission are not. The **Focus** was designed to bring retail sophistication under the canopy, and to allow you to “focus on your brand” by giving you a level of lighting control never before experienced in under-canopy lighting.



Designed to work in unison with the **ENCORE Low Profile** or **ENCORE Flat Lens**, the **ENCORE Focus** provides precision-guided spotlighting, allowing you to “focus” customer attention precisely where you want it, such as on dispensers, columns and P-O-P displays.



- **Optimal light control and superior vertical illumination are specifically designed for retail petroleum sites**
- **Meets IESNA requirements for cutoff classification**
- **Optics adjust vertically and horizontally for precise light control**
- **Hidden light source**
- **Modern daytime and nighttime appearance**
- **The lowest energy consumption while maintaining dramatic impact on the dispenser**

The foundation of the **ENCORE** canopy lighting system is the **NEW** top-access one-piece die-cast housing. Designed to accommodate four distinctively different optic systems, the **ENCORE** housing features flexibility, making optic conversions quick and simple, eliminating the need to replace the housing.

- **Designed for 12" or 16" single-deck canopies.**

- **Top Access Ballast Box Cover** - is held firmly in place by four clips, allowing for tool-less closure and entry. Cover keeps moisture out of ballast box.

- **Modular, Tool-less Drop-In Replacement Components** - reduce maintenance time.

- **Ballast Seal** - protects from weather exposure, and serves as an additional barrier to heat from lamp/socket assembly.

- **Lightweight, Die-Cast Aluminum Ballast Box** - is separated from the optical unit insulating it from the heat source (lamp/socket). This design eliminates the heat chimney effect, providing for cooler operation and extended ballast life.

- **Locking Collar** - securely fastens optical assembly to top of canopy once fixture is in place.

- **Patented Clips** - hold optical unit securely in place in the canopy to provide for quick, safe and easy, one-person installation.

- **One-Piece Canopy Seal** - a silicone gasket seals fixture to canopy, eliminating the need for field caulking.

- **Two Threaded Conduit Openings** - permit easy use of ballast box as a junction box.

- **Ballast Box Cover Clips** - provide for quick and easy tool-less entry and closure of cover.

- **Adjustable, Vertical Burn Lamp Assembly** - allows for lamp height adjustment and ground re-lamping.
- Shipped with lamp installed.

- **Die-Cast Aluminum Housing** - provides for totally sealed optical unit, preventing water, insects and debris from entering the lens area.
- Acts as a natural heat sink to draw heat away from ballast compartment.
- Die-cast construction ensures that every **ENCORE** fixture is manufactured to exact specifications for consistency and uniformity.



Please consult factory for UL Class I Division II applications.



ENCORE HIGH IMPACT — HIGH IMPACT LIGHTING

The **ENCORE High Impact** is everything you would expect from the Scottsdale and so much more. Designed for applications where higher visual impact is desired, the **ENCORE High Impact** provides the same lighting performance as the Scottsdale with the added flexibility of the **ENCORE** system.



- **Exceptional long-range visibility**
- **Maximum general lighting coverage**
- **High fixture efficiency through the use of the new ENCORE reflector system**
- **Light source fully recessed above canopy to eliminate lamp arc from view**
- **Traditional Scottsdale drop lens aesthetics**
- **Complete flexibility and simplicity to convert to other ENCORE optics if required**

THE NEW ENCORE LIGHTING SYSTEM



VERSATILE. FLEXIBLE. LOGICAL.

PROJECT A BRAND-FOCUSED IMAGE
UNLIKE ANY OTHER.





ENCORE LOW PROFILE — GENERAL ILLUMINATION

The **ENCORE Low Profile** blends the best features of high impact drop lens and flat lens fixtures to create a perfectly balanced canopy lighting solution for most any application.

Designed with an attractive low profile, optically cut prismatic glass refractor, the **ENCORE Low Profile** addresses brightness concerns while delivering drop lens aesthetics and performance.



- A cleaner, sleeker, more modern appearance day and night
- **NEW** 200-Watt lamp option available
- Greater visual comfort
- Better light control
- Excellent illumination on vertical elements and at grade
- Community-friendly appearance
- Ground relamping for easy maintenance

A FLEXIBLE, FULL CUTOFF SOLUTION

The **ENCORE Flat Lens** is specifically designed for areas where strict zoning regulations require full cutoff illumination. Utilizing new sophisticated reflector and vertical burn technology, the **ENCORE Flat Lens** delivers high-quality, even illumination while providing controlled-light distribution.

Today, it is not uncommon for zoning regulations to change, but up until now, if zoning changed, the only solution was to remove your existing fixtures and replace them with entirely new ones. Expensive and time-consuming, this would include changing ballasts, housings and wiring.

With the **ENCORE** system, you can respond quickly, easily and cost-effectively by simply converting to other **ENCORE** optics without changing the housings, ballasts, lamps or wiring.





ENCORE FLAT LENS — COMMUNITY-FRIENDLY LIGHTING

Designed to deliver high-quality illumination with controlled distribution in areas with zoning restrictions.



- Meets IESNA requirements for full cutoff classification, making it community friendly.
- Even illumination from vertical lamp orientation
- Greater visual comfort
- Clear flat tempered or diffused (C-73) lens available
- Quick and easy conversion from Flat Lens to other ENCORE optics
- Low energy consumption available with **NEW** 200-Watt lamp
- Ground relamping for easy maintenance

The **ENCORE** is also available in a unique "bottom access" housing for either single-deck or double-deck canopies, and for applications where electrical component access from below is required. This one-piece die-cast housing is designed to accommodate all of the **ENCORE** optic choices, making optic conversions quick and simple, eliminating the need to replace the housing.

- **Designed for single-deck, double-deck, enclosed soffit, new and retrofit canopy applications.**

- **Protected wiring** - before and after electrical connections are made, wiring leads are protected from the elements. 1/2" conduit openings permit easy use of wiring compartment as a junction box.

- **Safe and easy one-person installation** - one-piece die-cast housing is installed as a single unit from underneath the canopy.

- **Patented latch clips** - hold the housing securely in place in the canopy before it is locked into place with a locking collar.

- **Locking collar mounting footprint and larger compression ring** - evenly distribute the weight of the fixture.

- **Optional thermal protection** - available for enclosed watertight ceilings.

- **UL/CUL/CE**



- **Protected ballast and electrical components** - positioned inside the housing to provide maximum protection against inclement weather during and after installation.

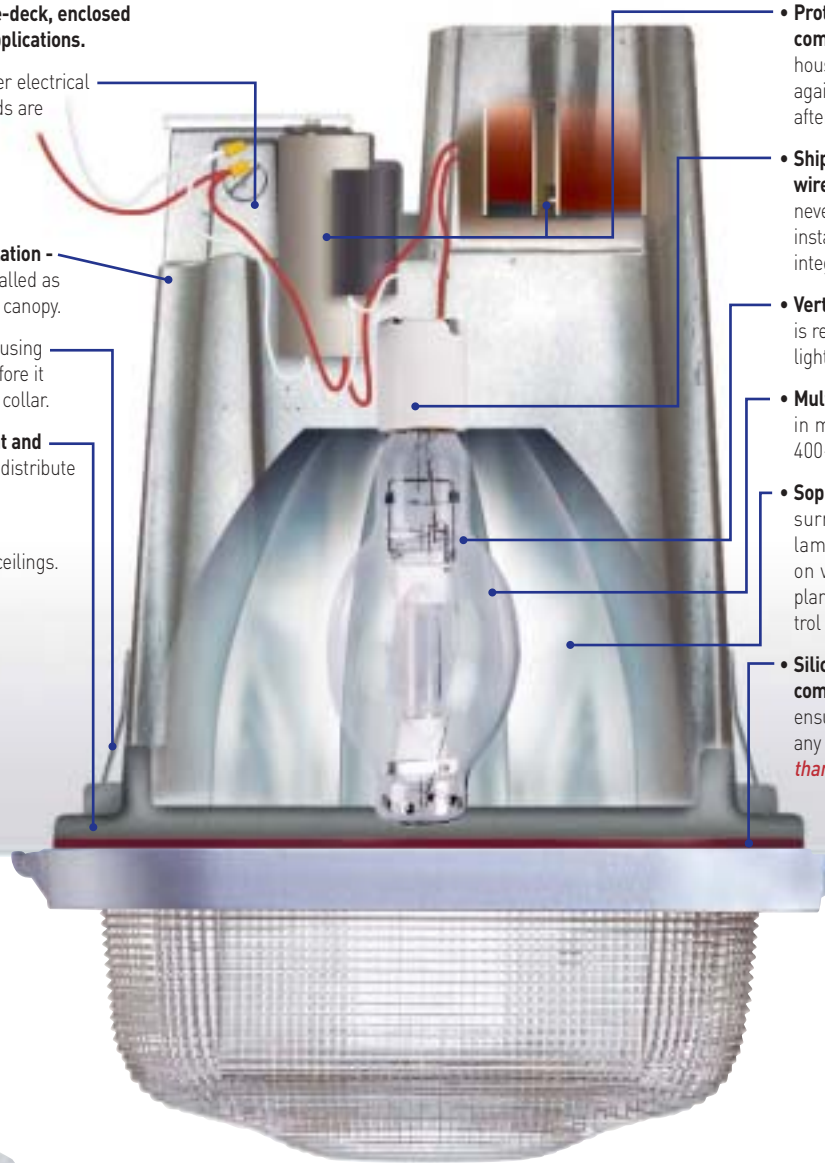
- **Shipped completely assembled and wired with lamp installed** - installer never has to open the fixture during installation, preserving its watertight integrity.

- **Vertical burn lamp assembly** - is recessed up in the housing, keeping light source out of line of vision.

- **Multiple lamp wattages** - available in metal halide wattages from 175 - 400-Watt, including **NEW** 200-Watt.

- **Sophisticated new reflector design** - surrounds the vertically oriented lamp, providing greater performance on vertical surfaces and horizontal planes, less glare, better lighting control and greater overall visual comfort.

- **Silicon gasket and die-cast compression ring sealing method** - ensure watertight integrity under any condition (*field-proven in more than a million Scottsdale fixtures*).



ACCOMMODATES ALL
ENCORE OPTIC CHOICES



LSI PETROLEUM LIGHTING